

William R Phillips, MD, MPH
The Maurice Wood Award
November 18, 2019



GENERALISM



GENERALISM

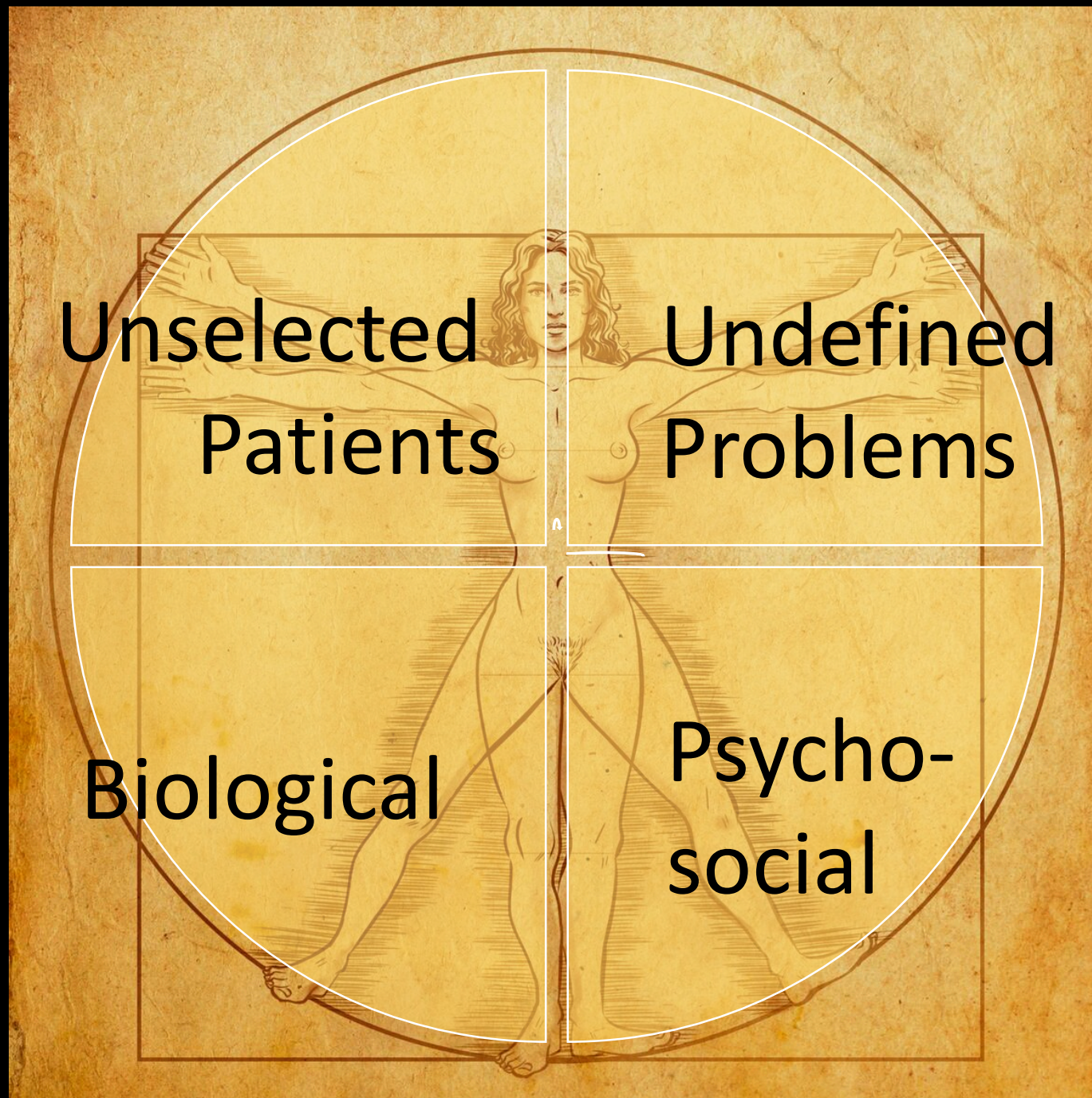
CARING



GENERALISM

CARING

CURIOSITY



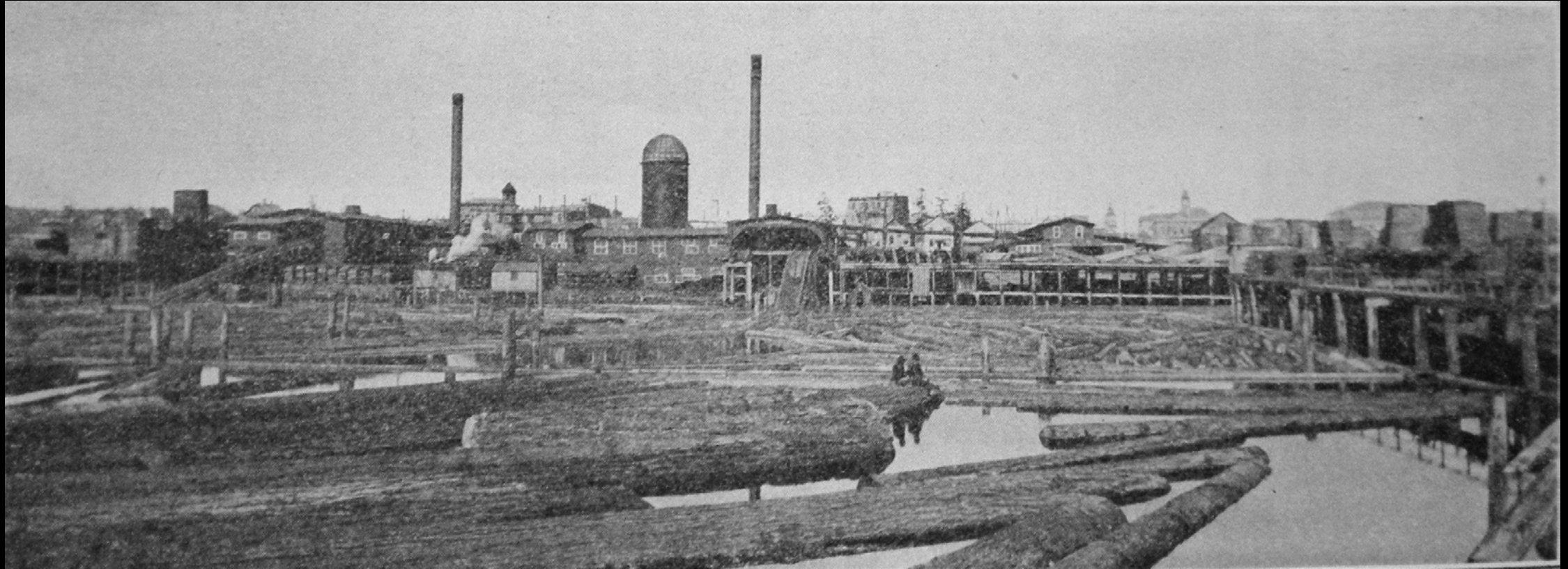




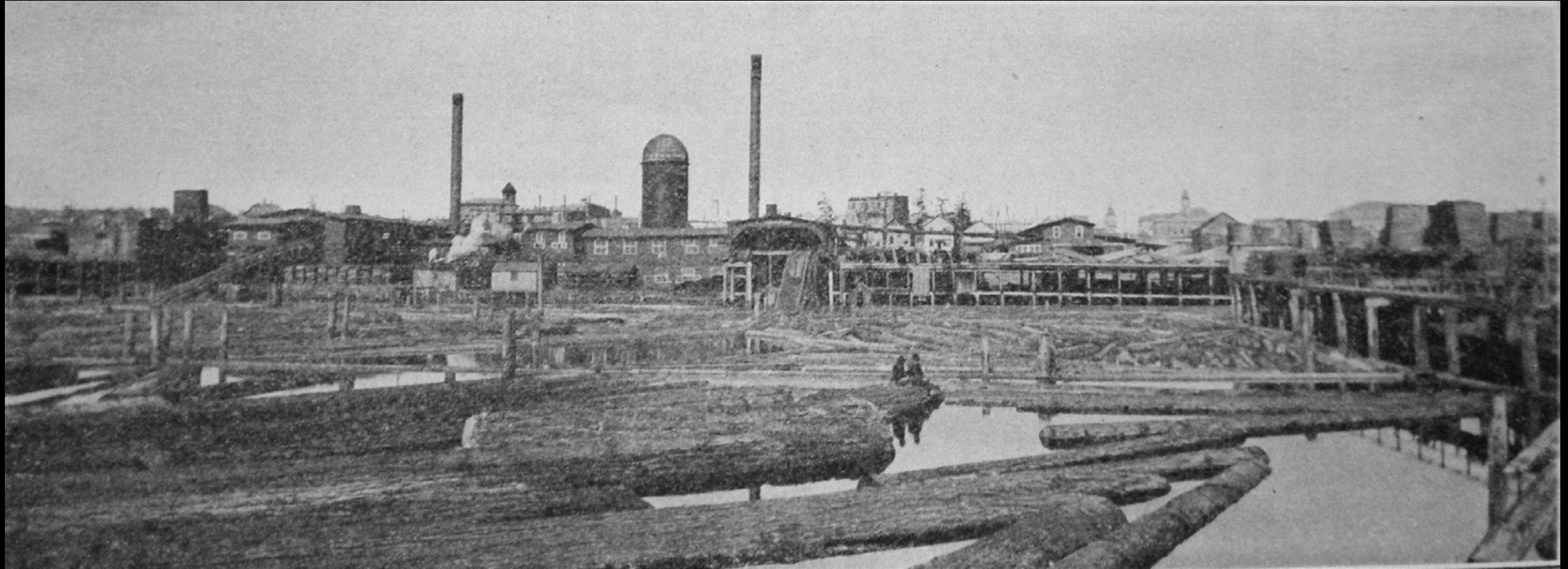
**Discovery is seeing what
everybody else has seen,
and thinking what
nobody else has thought.**

—ALBERT SZENT-GYORGI





Ballard (Seattle), Washington 1905



Ballard (Seattle), Washington 1905

SPECIAL COMMUNICATION

Zebras on the Commons: Rare Conditions in Family Practice

William R. Phillips, MD, MPH



SPECIAL COMMUNICATION

Zebras on the Commons: Rare Conditions in Family Practice

William R. Phillips, MD, MPH



FP Role in Pt Care

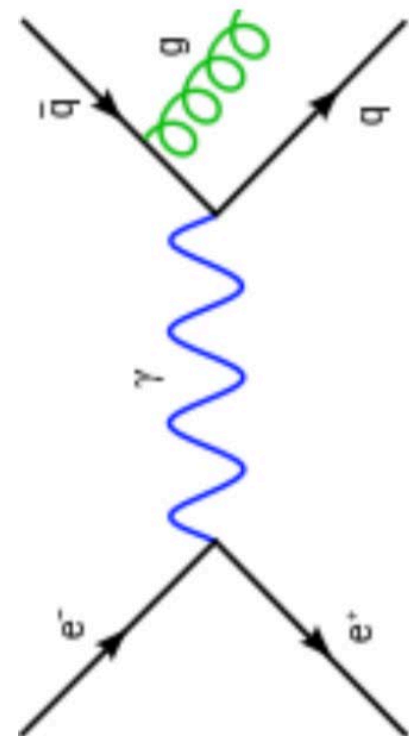
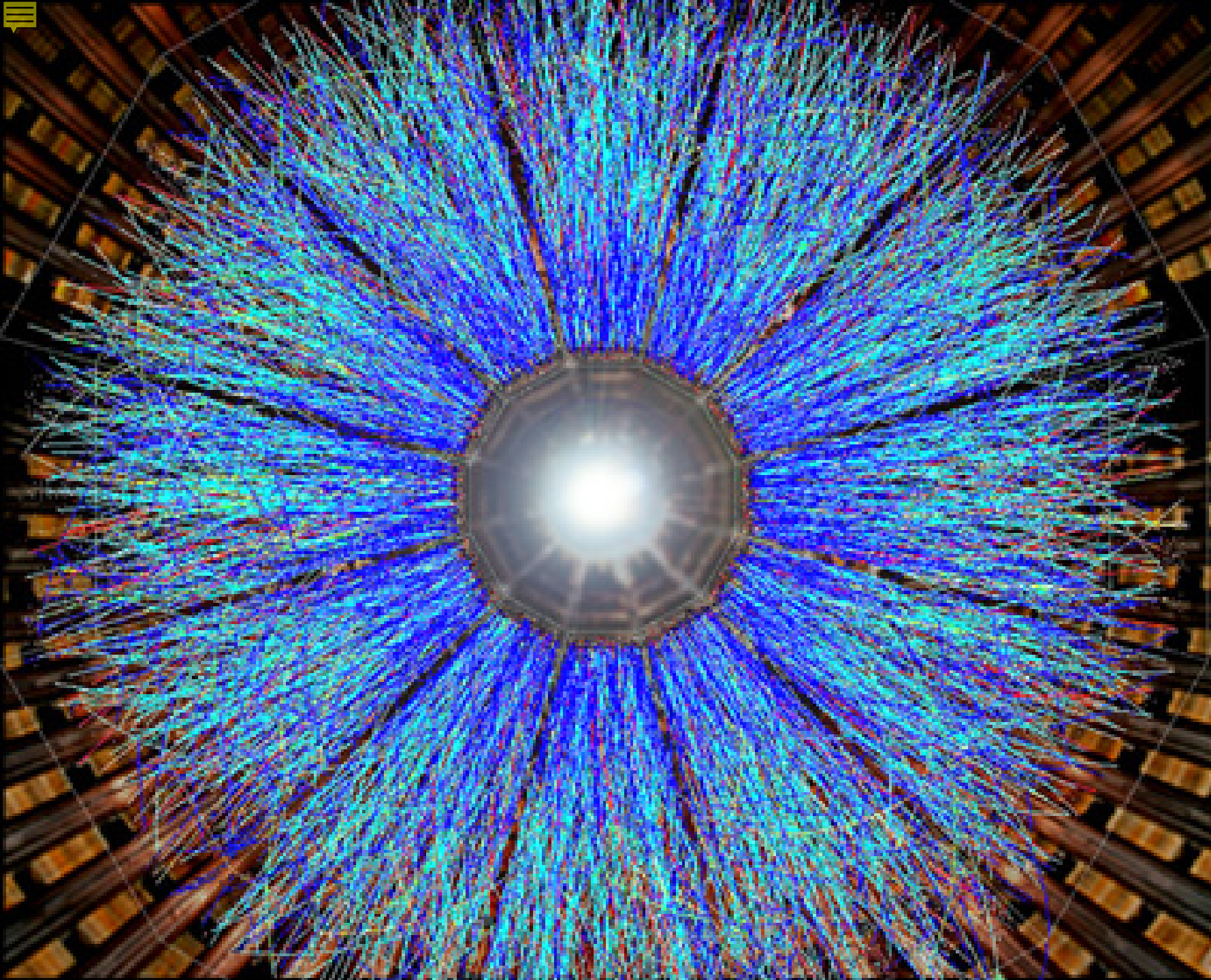
Identify 89%

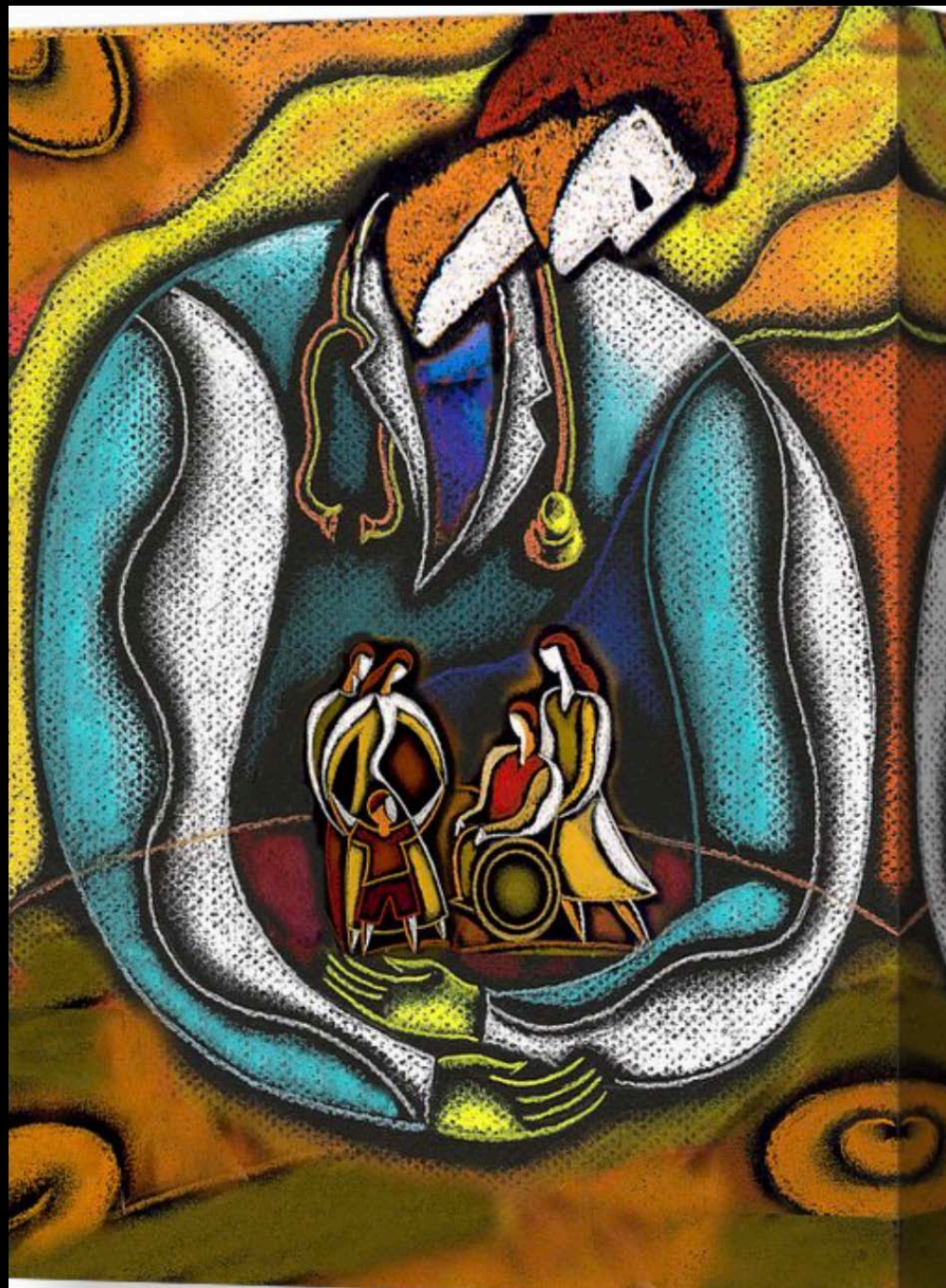
Diagnose 54%

Continuing care 76%









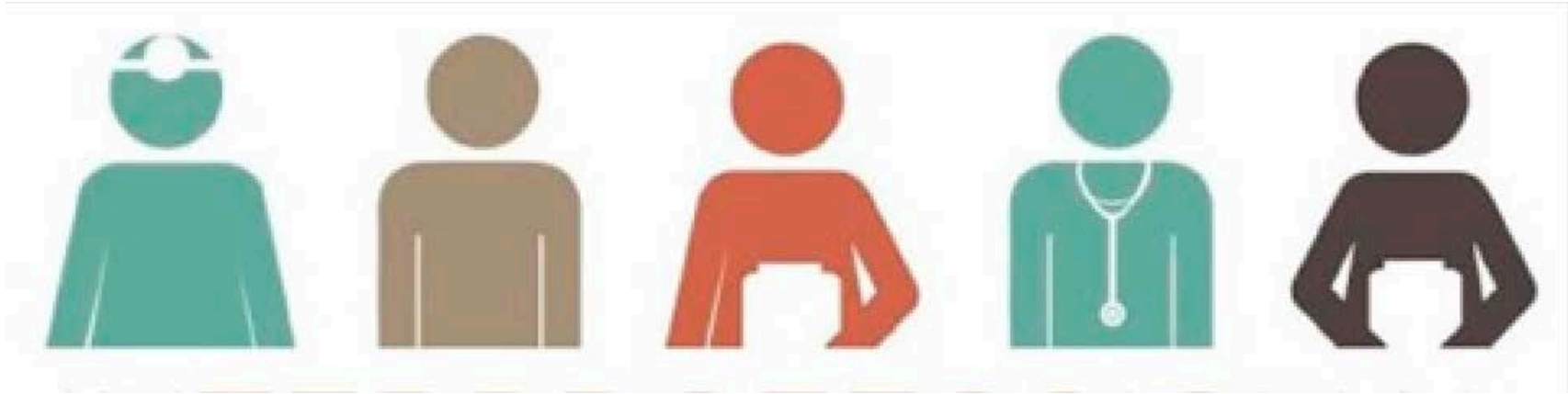






Interprofessional Primary Care Course Curriculum and Evaluation

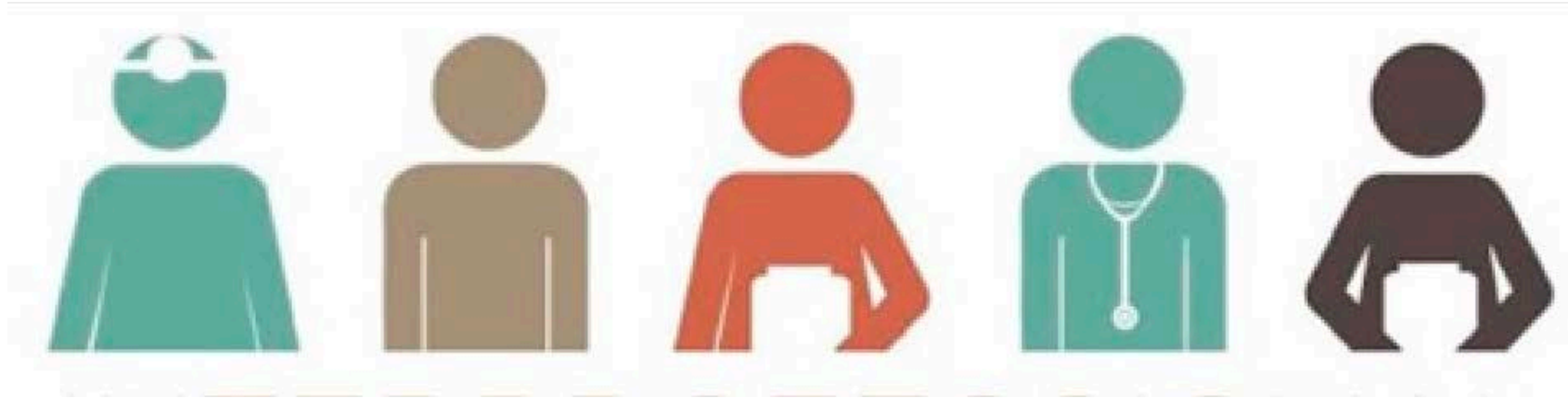
William R. Phillips, MD, MPH; Toby Keys, MA, MPH





Interprofessional Primary Care Course Curriculum and Evaluation

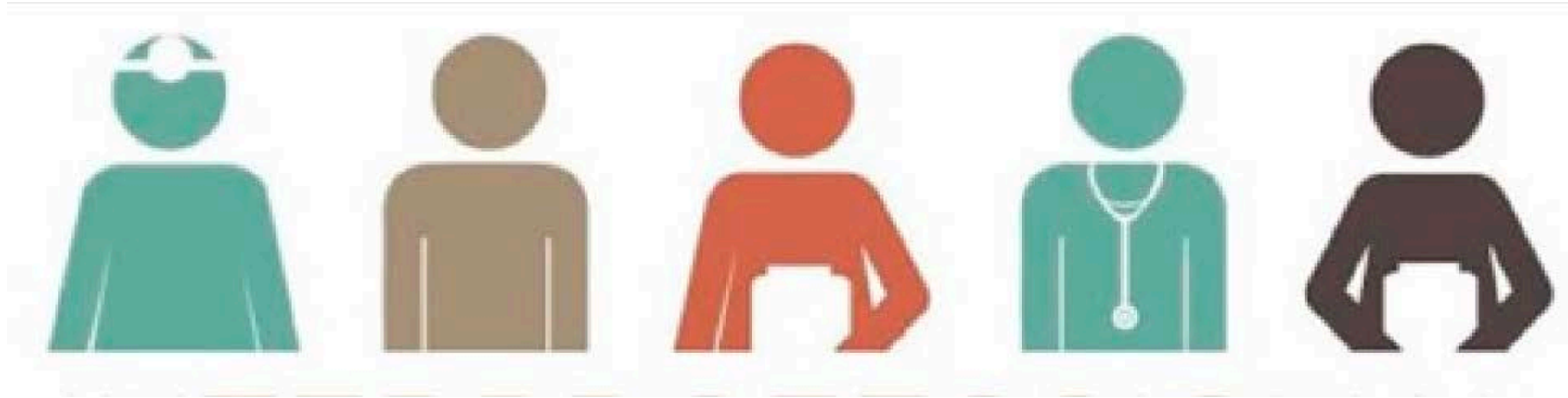
William R. Phillips, MD, MPH; Toby Keys, MA, MPH





Interprofessional Primary Care Course Curriculum and Evaluation

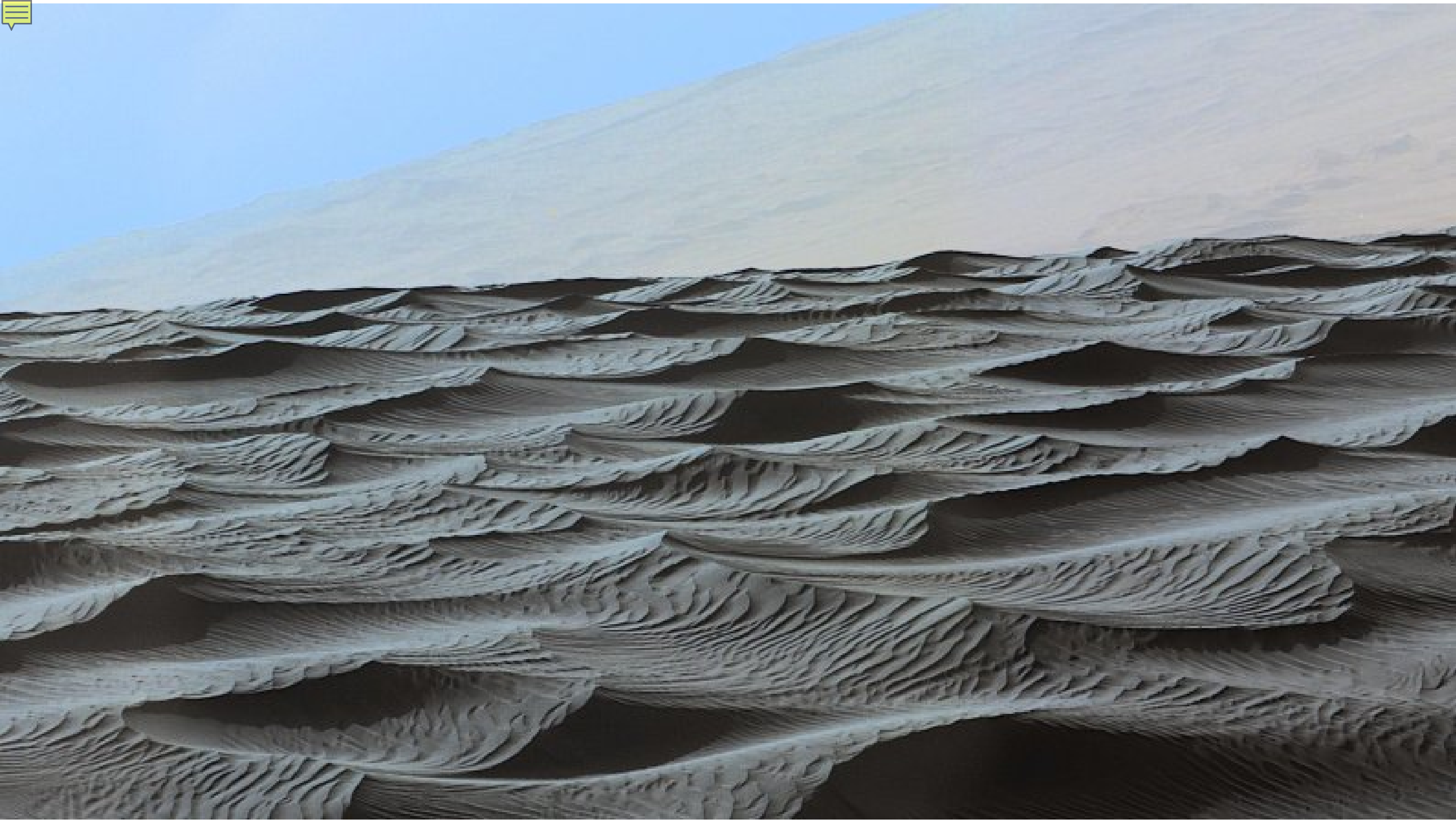
William R. Phillips, MD, MPH; Toby Keys, MA, MPH



- 93% - Recommend course to all students
- 41% - Require course for all students
- 55% - Recruited to career in primary care

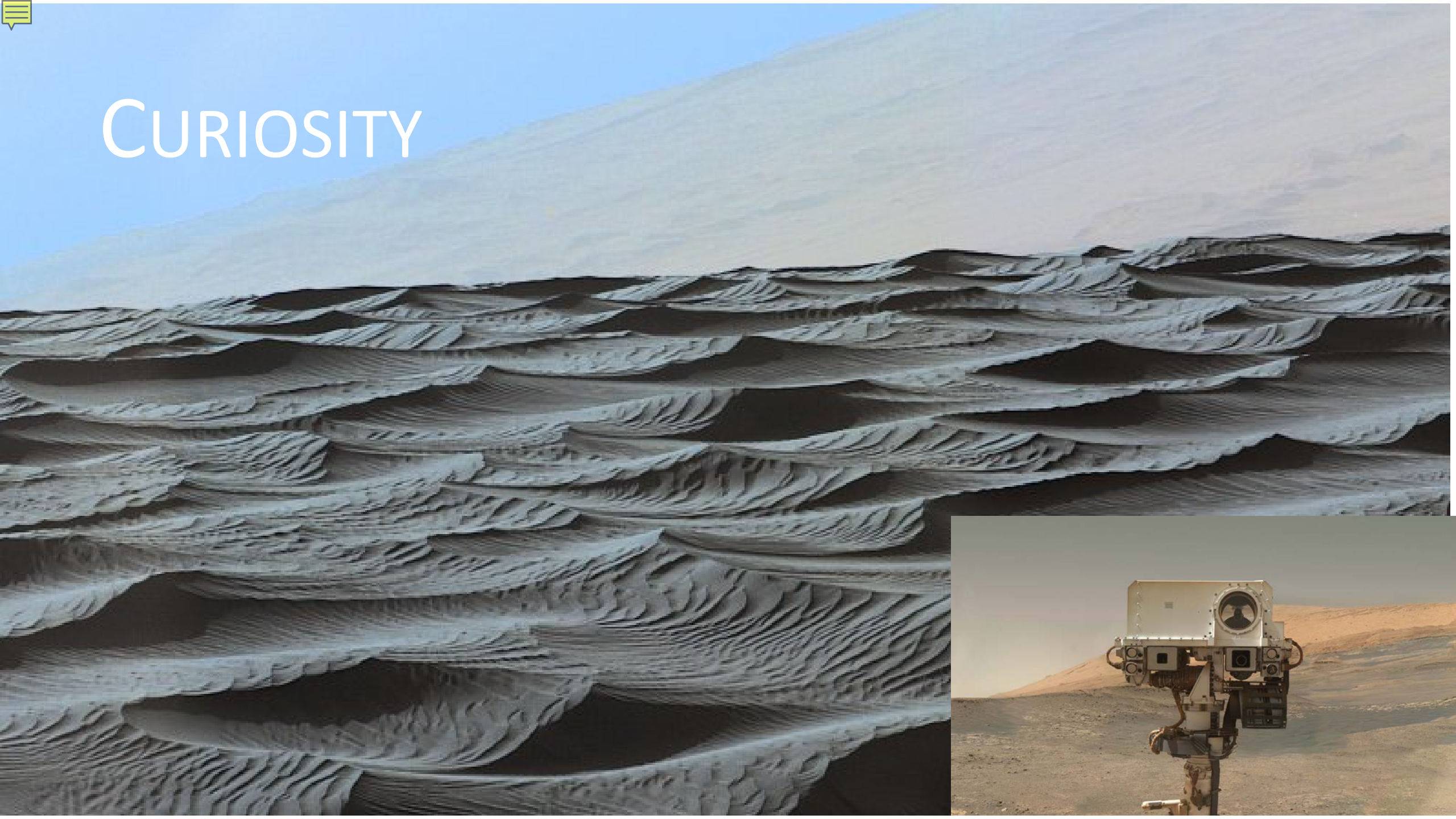








CURIOSITY







Linus Pauling

Woody Guthrie





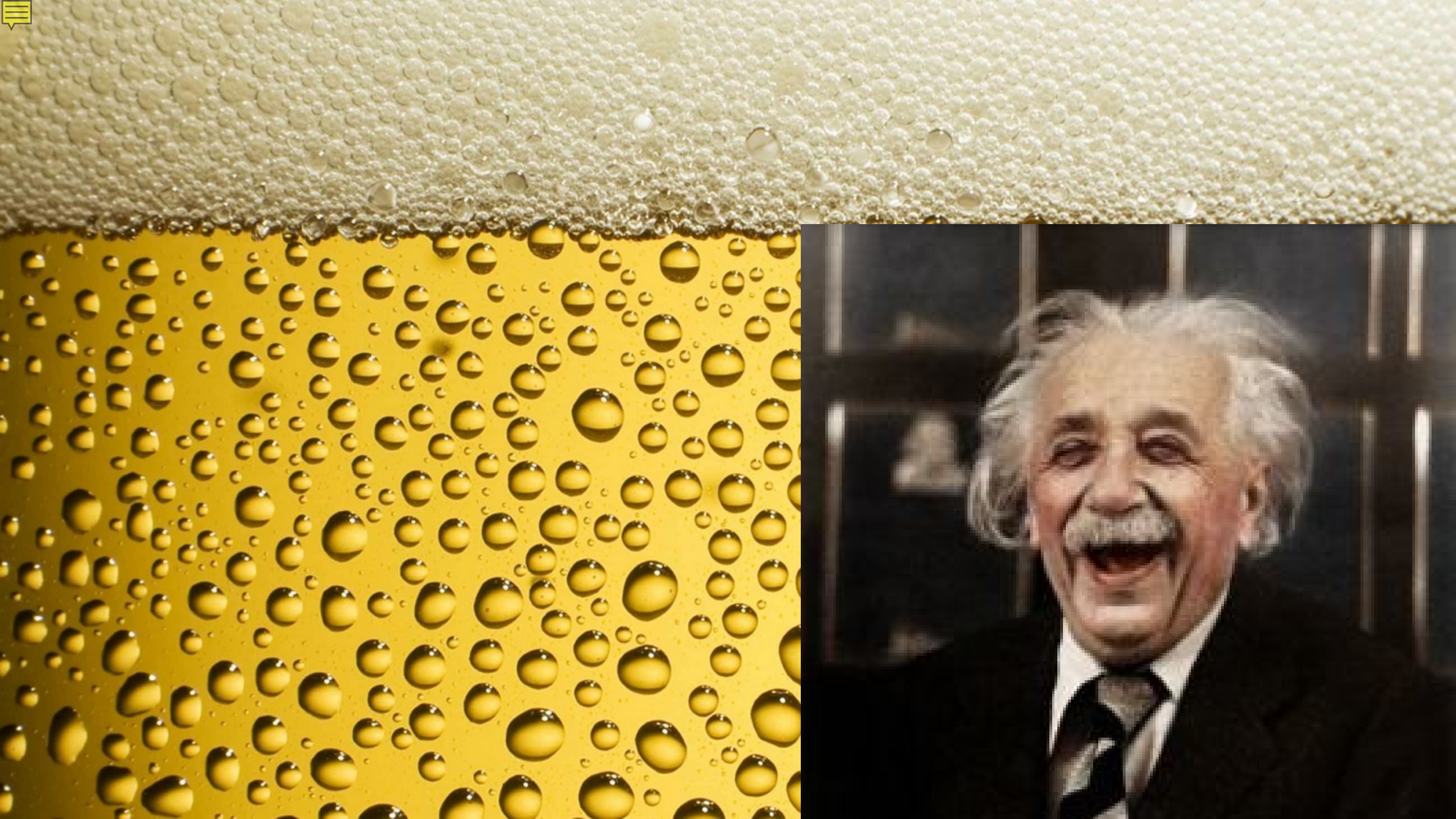
PARTNERS

**Patients and Researchers Together at
NAPCRG Evaluating Research Studies**

BMJ











Family Practice

The International Journal for Research in Primary Care

VOLUME 36 NUMBER 3 JUNE 2019

<https://academic.oup.com/famp>

ANNALS OF FAMILY MEDICINE

www.annalsfamilymedicine.org

EDITORIALS

168 Is It Time to Change Prescriptions for Change?
Julia R. Hays

169 Necessary But Not Sufficient: Why Health Care Plans
Cannot Improve Population Health and Reduce Health
Inequities
David A. Asch

ORIGINAL RESEARCH

170 Patient Reported Research in Primary Care: Review and
Perspective
Michael J. Ray, Charles J. Matthews, et al. (Submitted Study)
It has been 10 years since the first Patient Reported Outcome
Measures (PROMs) were used in primary care.

171 Patient and Subsequent Care Outcomes and Burden of
Unmet Medical Needs among Patients with Diabetes in the
United States, 2010-2017
Gordon L. Smith, et al. (Submitted Study)

172 Comparing Appropriateness of Prescribing Physicians
Across Health Systems and Outcomes: A Review of the
Literature
David A. Asch, et al. (Submitted Study)

173 A New Comprehensive Measure of High-Risk Patients
at Primary Care
Robert D. Hill, et al. (Submitted Study)

174 Prevalence of Behavioral Problems in Uncomplicated
Lower Respiratory Tract Infections
Michael J. Ray, et al. (Submitted Study)

175 Reducing Primary Care Medication Inequities for
Patients Reporting Food Insecurity
Michael J. Ray, et al. (Submitted Study)

THEORY

176 Testing Implementation Science Theory to Improve
Primary Care Practice
Michael J. Ray, et al. (Submitted Study)

SYSTEMATIC REVIEWS

177 Systematically Implemented Prescribing Review: Does
It Improve or Worsen Outcomes of Prescribed Medicines?
The Medicines for People with Diabetes (MEDI) Group

SPECIAL REPORTS

178 Contributions of Health Care to Longevity: A Review of
a Systematic Literature
David A. Asch, et al. (Submitted Study)

INNOVATIONS IN PRIMARY CARE

179 Innovations in Comprehensive Care Models for Patients
with Chronic Conditions
David A. Asch, et al. (Submitted Study)

180 A Systematic Review to Identify Primary Care
Models
David A. Asch, et al. (Submitted Study)

181 Training for Dependence in Primary Care: A Review
of the Literature
David A. Asch, et al. (Submitted Study)

DEPARTMENTS

182 FAMILY MEDICINE UPDATES
Keep track of the latest news that impacts the field

183 EMPLOYMENT OPPORTUNITIES
Announcements of job openings, or go to www.annalsfamilymedicine.org



JABFM

JOURNAL OF THE AMERICAN BOARD OF FAMILY MEDICINE

VOLUME 31, NUMBER 5

SEPTEMBER-OCTOBER 2018



IN THIS ISSUE:

Young Family Physician Hospitalists
Patient Perspectives on Care Coordination
Behavioral Health Integration at High Performing Practices
Collaborative Care Management for Disease
EHR Tool for Integrated Behavioral Health
Depression Screening and Symptom Severity by Alcohol Use
Getting Patients Engaged at the Practice-Level
Gender, Diabetes, and Medication Cost Nonadherence
Shared Decision-Making and Medication Adherence
Opioid and Drug Prevalence in Top 40's Music
Epidural Analgesia and Vaginal Laceration
Screening for Urinary and Fecal Incontinence
Novel Exercises for Restless Legs Syndrome
MRI Application in Soft Tissue Wrist Injury
Doctor-Patient Communication and Medical Marijuana
Edema from Cinnamon for Treatment of Diabetes
Decision Support Based Intervention and Sickle Cell Disease
Oral Anticoagulants in Preprocedural and Acute Settings

Journal

OF PRIMARY HEALTH CARE

JGIM

Journal of General Internal Medicine

Family Medicine

THE OFFICIAL JOURNAL OF THE SOCIETY OF TEACHERS OF FAMILY MEDICINE



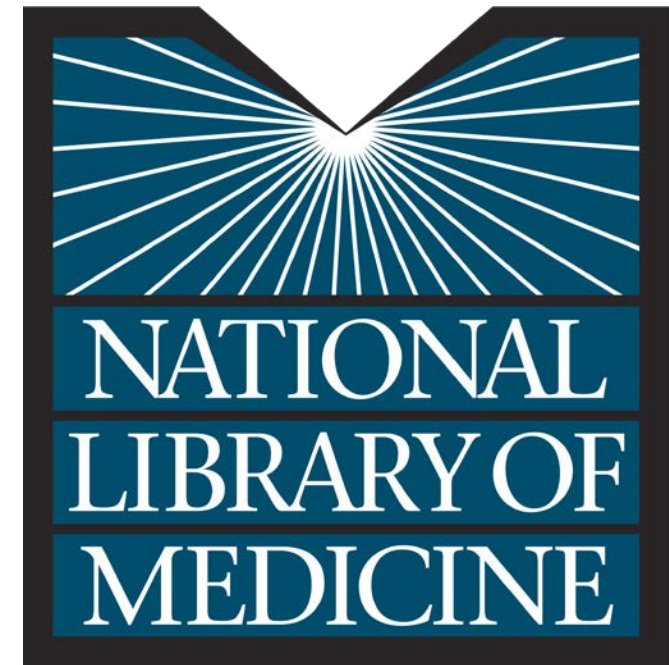
BJGP

RESEARCH CONFERENCE

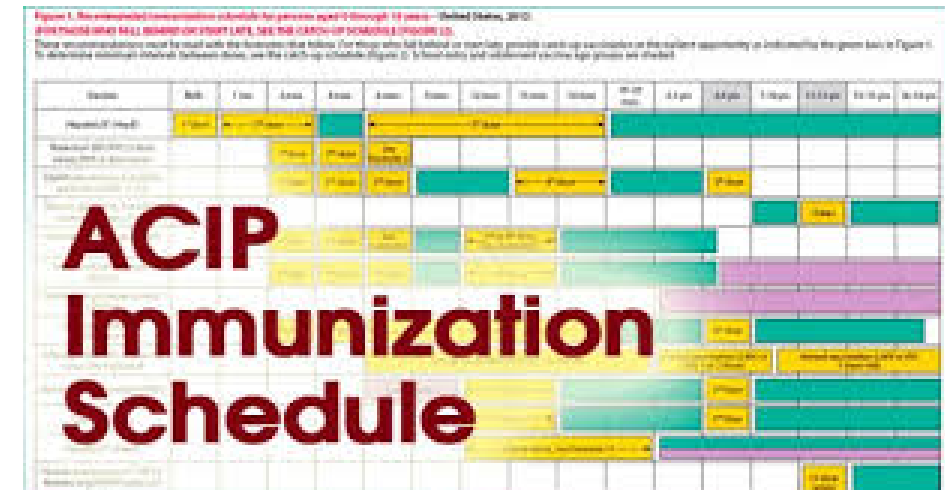
23 March 2018 | RCGP, London

Promoting excellence in primary care and
inspiring researchers and authors of the future



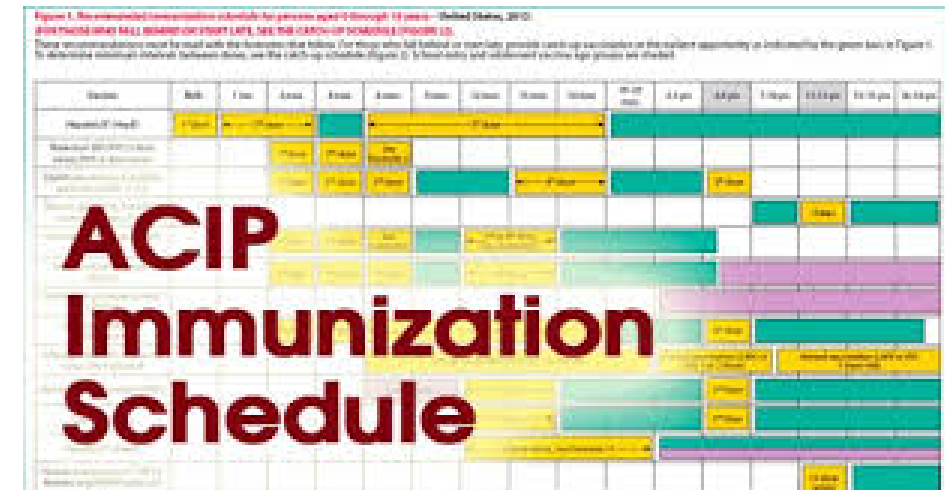


BlueCross BlueShield





BlueCross BlueShield





For that problem, most patients get most of their care in primary care.



That's not the way it works - or not the way it feels – in practice.



Do we have the right people sitting around the table for this discussion?



We all agree we're after what is best for the patients.



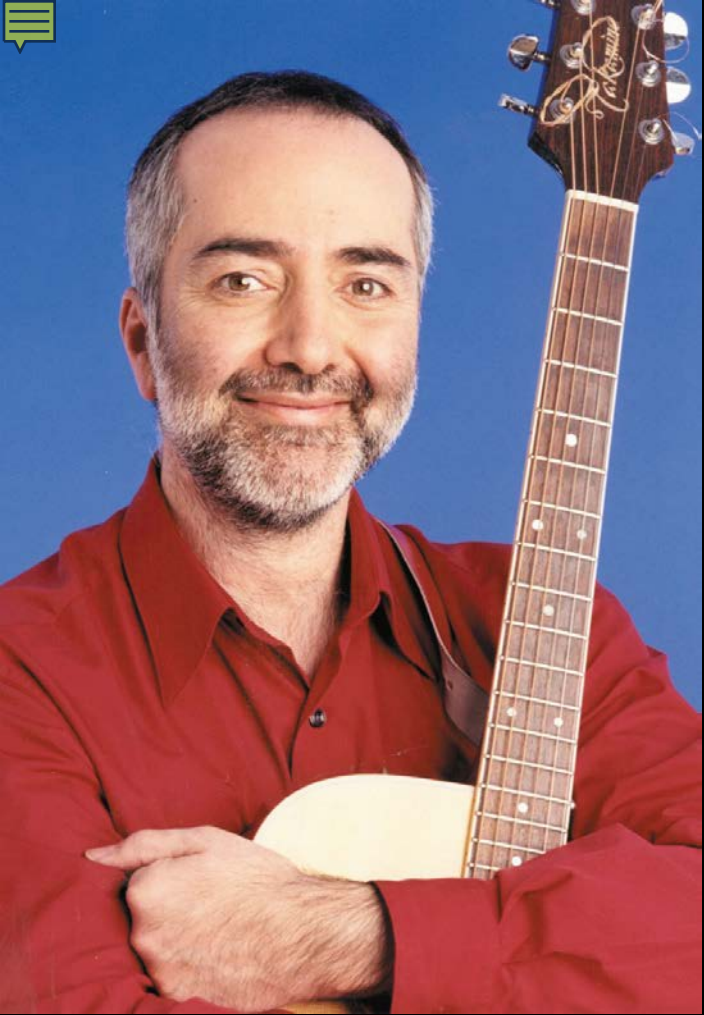
I don't know.

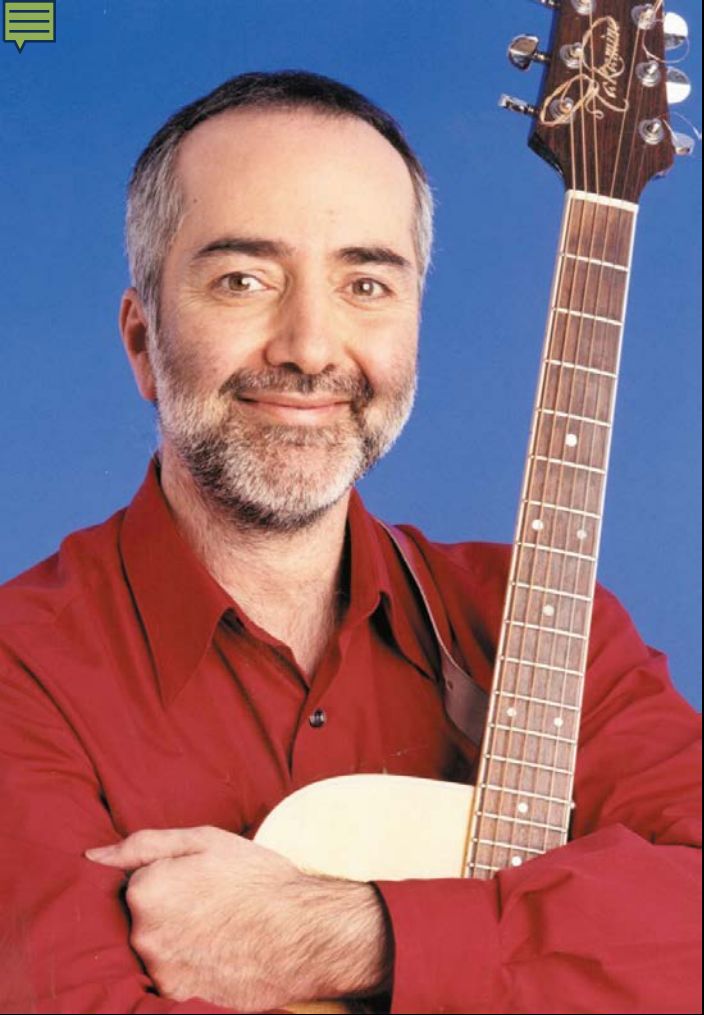


Copyright © 2008
"Karl" D. Miller, Ph.D.







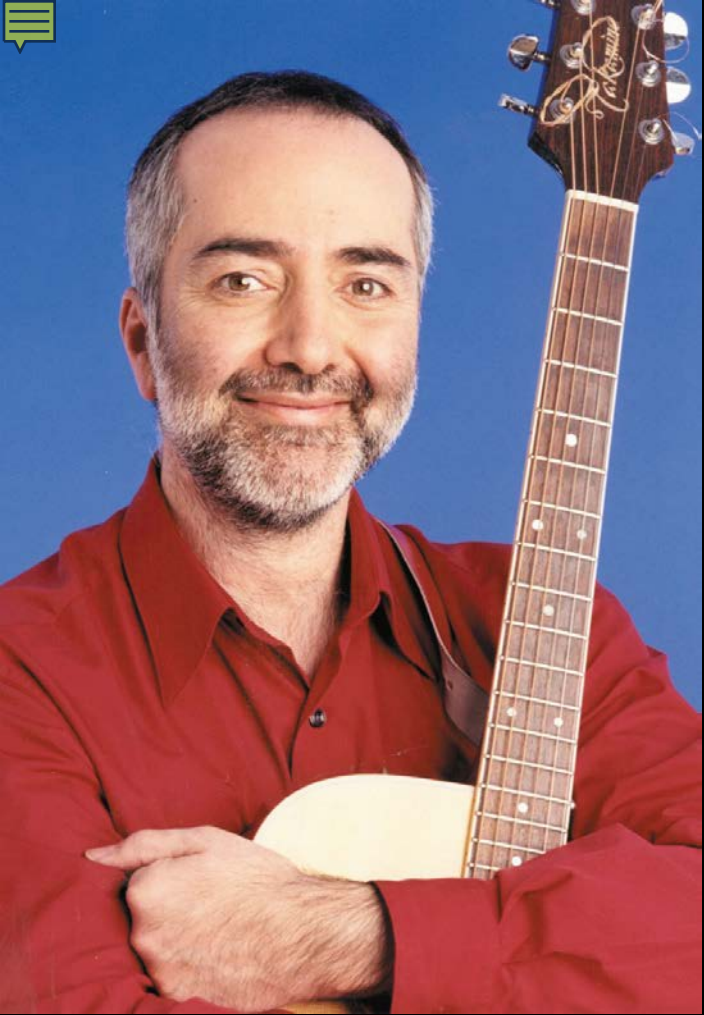


This little light of mine,] x3
I'm going to let it shine.



Let it shine.
Let it shine.
Let it shine.





All around the world,
We're going to let it shine.] x3



Let it shine.
Let it shine.
Let it shine.



Thank You



Please join me for Q&A and discussion

Wood Award Conversation

Monday, 11/18

2:15-3:00pm

Dockside Room